

IRISS®

Infra Red Inspection Support Solutions



IRISS® Infra Red Inspection Viewing panes and grills are designed to eliminate risks associated with conducting Thermographic Inspections of Energised switchgear and electrical installations

IR Viewing Panes & Grills

Features of the IRISS range of Viewing Panes & Grills

- Suitable for use with ALL makes of Infra Red Cameras
- IP65 NEMA 4 rated both open & closed: VPFR & VPFC Range
- Allows safe thermal imaging of fully energized electrical components through closed doors
- Manufactured using non conductive materials
- VPFR Lens Assembly is recognized to UL 508A and 746C for flammability and Impact resistance.
- IEEE C37.20.2 Section A.3.6 Compliant for metal clad and station switchgear
- Supplied with drilling template, fitting instructions and operator ID labels



Using IRISS® IR Viewing Panes for LIVE IR Inspections Avoids 99.9% of the Triggers of Arc Flash

Web: www.iriss.com

Tel: +44 (0) 1245 500 460

Email: info@iriss.com

A Division of Global Maintenance Technologies Ltd

WHAT IS AN INFRA RED VIEWING PANE?

The definition of any Viewing Pane (window) be it visual or Infra Red is a device that is used to separate two environments of different pressure, temperature, etc., while allowing light at a specified wavelength to pass between the two.

IR Viewing Pane Classification:

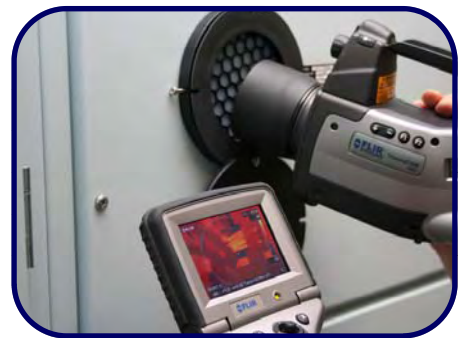
Ensures that the IR viewing lens is IP65 / NEMA 4 rated when open or closed and that the lens assembly has passed all the relevant mechanical tests outlined by UL 508, UL 746C and IEEE C.37.20.2 section a.3.6. Using an IR viewing pane will ensure that the thermographer is not exposed to energised electrical components and removes the requirement for high levels of PPE.

IR Viewing Grill Classification:

Ensures that the viewing grill has a maximum IP2X orifice size (13mm 0.5") and the viewing grill body assembly is IP65 / NEMA 4 when not in use and has passed all relevant tests outlined by UL 508, UL 746C and IEEE C.37.20.2 section a.3.6. Using an IR viewing pane allows the thermographer to inspect energised electrical components, they are however still exposed to energised components and will require the correct levels of PPE for the equipment that they are inspecting.

VPFR: Reinforced Fixed Optics

For the first time, UL has tested an infrared window as an open assembly. Previous to now, all UL certification tests for Infra Red Viewing Panes were completed on closed assemblies. This has now changed! For the first time UL applied their standard UL 746 C and its requirements for the viewing optic to our VPFR range of IR Viewing Panes which are the only IR Viewing Pane assembly that is IP65 rated (NEMA 4) and has a lens assembly that has passed all the test requirements of 508a and 746 C 6th Edition. As well as IEEE C.37.20.2 section a.3.6



VPFC: Crystal Fixed Optics

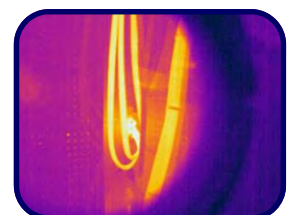
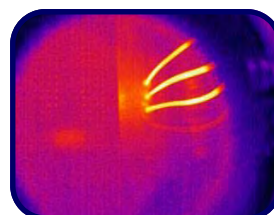
The VPFC range of Viewing Panes are our crystal based Viewing Panes. The VPFC range utilizes Calcium Fluoride, Germanium, Zinc Selenide and Sapphire as lens materials; the choice of material required will depend on the application. These have been through the UL 508 test, but are not required to be subjected to the UL746c tests as they are 3mm thick and currently exempt impact and flammability testing.



VPG: Infra Red Viewing Grills

The VPG has a viewing grill rather than a viewing crystal. This grill allows full access for an image to be taken but protects the panel from objects falling into the component during the inspection. An additional benefit of using IR viewing Grills is that they can be used to conduct acoustic emission inspections on electrical switchgear at the same time as the IR inspection and they meet the IEEE requirements for impact and load.

Your Local IRISS Agent is:



For more information on IRISS products visit www.iriss.com or contact your local agent