

IR
FLEXCAM[®]
PRO 320

NEW
25 MICRON
320x240 RESOLUTION

✦ **S H A R P E R**
✦ **S I M P L E R**
✦ **S M A R T E R**



HIGHEST IMAGE QUALITY

- 5 inch color LCD
- VOx Microbolometer
 - ≤ 70 mk NETD
 - 60 Hz detector frame rate

BEST IMAGE RESOLUTION*

- 320 x 240 focal plane array
- 25 micron pixel pitch
- 10, 20 & 54mm high quality Germanium lenses

EASIEST-TO-USE

- 180° Pivoting Lens
- Intuitive operation with on-camera Windows CE interface
- Camera tools designed for professional thermographers

NEW SMARTVIEW™ SOFTWARE

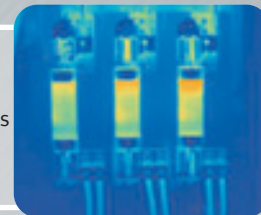
- Highest-customizable professional reporting
- Feature rich image analysis tools
- Exceptionally intuitive and easy to use

*FOV Dependent

APPLICATIONS

Predictive Maintenance

Identifying and fixing electrical and mechanical problems can reduce downtime, prevent disastrous failures and save time, lives and money.



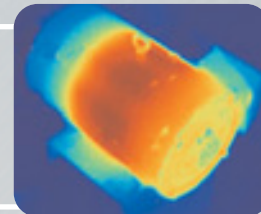
Power/Utility

Perform temperature analysis to monitor substations, transmission lines, power connections, and other transmission equipment for future heat related damage before it becomes an issue.



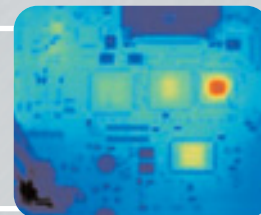
Process Monitoring

Monitoring and observing temperatures of processes in real-time can save time and money by ensuring that they are operating safely and efficiently.



Research and Development

Visualizing and quantifying the heat patterns generated enables engineers to improve their product as well as the processes used to create it.



Infrared Solutions, Inc.

3550 ANNAPOLIS LANE NORTH SUITE 70
PLYMOUTH MN 55447 USA

T 800 760 4523 F (763) 551 0038

WWW.INFRAREDSOLUTIONS.COM


infrared
SOLUTIONS
SHARPER • SIMPLER • SMARTER™

IR FLEXCAM® PRO320 PORTABLE INFRARED SYSTEM



Imaging Performance	
Detector	60Hz 320x240 Focal Plane Array (FPA), Vanadium Oxide (VO _x) Uncooled Microbolometer
Spectral Band	8μm to 14μm
Thermal Sensitivity	≤ 0.070°C at 30°C
Focusing	Single Finger Manual Focus
Electronic Zoom	2X, 4X, 8X
Digital Image Enhancement	Automatic Full-time Enhanced

Display and Image Storage	
Digital Display	5" high-resolution, 320 x 240, sunlight readable color LCD
On-screen Indicators	Indicate status of battery, target emissivity, background temp and real-time clock
Palettes	8 unique palettes available
Storage Medium	Compact Flash Card (stores over 1500 images).
File Formats Supported	14 bit measurement data included. Exportable JPEG, BMP, PCX, PNG, PSD.
Set-up Controls	Date/time, Temperature units C/F, Language, Scale, LCD intensity (high/normal/low)
Image Controls	Level, Span, Auto Adjust (continuous/manual)
Image Browsing	Full-screen and thumbnail
Enhanced Text Annotation of Images	User definable, automatically included in reports
Programmable Image Capture	Program camera to automatically capture thermal images

Temperature Measurement	
Calibrated Temperature Ranges	Range 1 = -20°C to 100°C (-4°F to 212°F) (standard model) Range 2 = -20°C to 350°C (-4°F to 662°F) (standard model) Range 3 = 250°C to 600°C (482°F to 1112°F) (standard model)
Accuracy	±2°C or ±2%
Measurement Modes	Movable points & boxes, centerpoint, center box (area min/max, average), automatic hot and cold point detection, isotherm, color alarm above and below.
Emissivity Correction	Based on user input. Variable from 0.1 to 1.0 (0.01 increments)

Standard Optics	
20mm f/0.8 Germanium	Field of view: 23° Horizontal x 17° Vertical (optional lenses available)
Spatial Resolution (IFOV)	1.30 mrad IFOV, 0.15m minimum focus

Power	
Battery Type	Li-Ion Smart Battery, rechargeable, field-replaceable
Battery Operating Time	3 hours continuous operation
Battery Charging	2 bay intelligent charger powered via AC outlet or optional 12v from car
AC Operation	AC adapter 110/220 VAC, 50/60Hz
Power Saving	Automatic shutdown and sleep modes (user specified)

Interfaces	
Video Output	RS170 EIA/NTSC or CCIR/PAL composite video

Physical Characteristics	
Weight	1.95kg (4.3lbs) including battery
Size	69mm x 262mm x 162mm (2.75" x 10.5" x 6.5") camera only
Tripod Mounting	1/4" – 20 UNC

Environmental	
Operating Temperature	-10°C to +50°C (14°F to 122°F)
Storage Temperature	-40°C to +70°C (-40°F to 158°F)
Humidity	Operating and storage 10% to 95%, non-condensing
Shock / Vibration	25G, IEC 68-2-29 / 3G, IEC 68-2-6
Encapsulation	IP54, IEC 60529
Transit Drop	MIL-STD-810F, Method 516.5, Procedure IV
Agency Approvals	CE Approved (EN61326 Standard)

Warranty	
Term	12-month warranty included; extended options available

Standard Equipment			
IR Camera with 20mm f/0.8 lens	SmartView™ Software	Premium Carrying Case	Operation Manual
Compact Flash Card	Shoulder Strap	AC Adapter	Video Cable
USB Card Reader	2 Rechargeable Batteries	Battery Charger	PCMCIA Adapter

Optional Equipment			
54 mm Telephoto Lens (9"H x 6"V), 0.47 mrad IFOV, 0.6m min Focus	10.5 mm Lens (42"H x 32"V), 2.45 mrad IFOV, 0.3m min Focus	Power Cable for 12v from car to charger	Laser Pointer
	Heads Up Display		Extra Batteries
			Sun Shield