

# IR SnapShot™

## Portable Infrared Imaging Radiometer



*IR SnapShot™  
Model 525*

- Designed for preventive maintenance
- Standard calibration of 0-350°C (customized ranges available)



*IR SnapShot™  
Model HT (High Temp)*

- Standard calibration range of 10-1200°C

### DOUBLE YOUR ROI

Use the IR SnapShot for

- 1 Preventive Maintenance
- AND
- 2 Process Quality Management

[www.infraredsolutions.com](http://www.infraredsolutions.com)



Prevent Downtime



*Infrared imaging identifies bad battery cells in an air traffic control emergency backup system, preventing a catastrophic failure.*



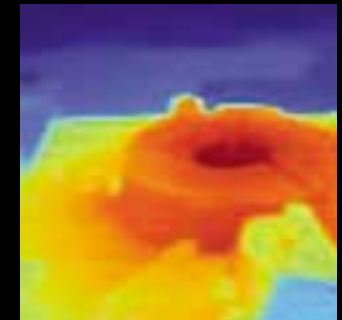
Reduce Energy Costs



*Infrared imaging helps ensure wire insulation and electric load balances are proper to maximize efficient energy use.*



Maintain Quality



*Prevent your process from drifting by comparing thermal images*

- Proven Technology
- First affordable radiometric camera
- Rugged design
- Easy to use (no special training required)
- Includes analysis software (no licensing limitations)



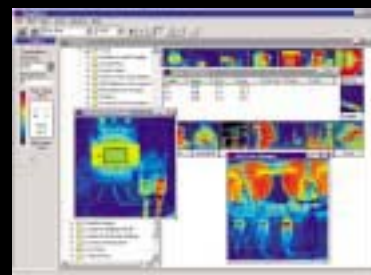
# IR SnapShot™ Portable Infrared Imaging Radiometer

## Specifications

<b>Performance</b>	
Detector	Uncooled Thermoelectric 120 element linear array
Detector Size	50 µm square on 55 µm centers
Spectral Band	8 µm to 12 µm NETD 0.1°C @ 30°C
Image Scan Time	<1.5 seconds
System Dynamic Range	16 bits with 12 bits usable
Accuracy	2°C or 2% of reading
Measurement Temperatures	<b>Model 525:</b> 0 to 350°C, custom from -30°C to 350°C and 0°C to 600°C <b>Model HT:</b> 10-1200°C
Operating Temperature	0 to 40°C, custom 0 to 50°C
Functions	Focus, snap, store, scan, recall, hot spot, frame average, histogram and setup menu
Setup Options	Emissivity, background temperature, temperature units, color palettes, autoscale and fixed ranges
<b>Display and Image Storage</b>	
Digital Display	4.0 inch color LCD
Digital Storage Medium	16MB Compact Flash
<b>IR SnapView™ Software</b>	
Image File Format	Proprietary (isi) format; can be output as Microsoft® Word® compatible JPG, PCX, BMP format
<b>Standard Optics</b>	
20mm f/0.8 Germanium	Field of View: 18.7° horizontal and vertical
<b>Interfaces</b>	
Communication	RS-232, 300 to 115K baud selectable
Video Output	Selectable NTSC or PAL
<b>Electrical</b>	
Battery	NiCd, 3 AH, estimated 90 minutes battery life
L x W x H	9.4 x 3.9 x 5.1 inches
Weight (with lens and battery)	4.4 LB
<b>Standard Equipment</b>	
<ul style="list-style-type: none"> <li>• IR SnapView™ Image Analysis Software for Windows®</li> <li>• 3 AH Camcorder Battery</li> <li>• Battery Charger</li> <li>• Heavy Duty Carrying Case</li> </ul>	<ul style="list-style-type: none"> <li>• 16MB ATA Compact Flash Card with PCMCIA Adapter</li> <li>• Padded Neck Strap</li> <li>• Video Cable</li> <li>• User Manual</li> </ul>
<b>Optional Equipment</b>	
<ul style="list-style-type: none"> <li>• 50mm Lens</li> <li>• 10.5mm Lens</li> <li>• Laser Pointer Assembly</li> <li>• Sun Shield</li> </ul>	<ul style="list-style-type: none"> <li>• AC/DC Power Adapter</li> <li>• DC/DC Converter</li> <li>• 14.4 AH Battery Belt</li> <li>• Remote Operations Software</li> </ul>

[www.infraredsolutions.com](http://www.infraredsolutions.com)

©2002 Infrared Solutions Inc. SnapShot and SnapView are trademarks of Infrared Solutions Inc.  
All other trademarks and registered trademarks are property of their respective owners. All rights reserved.



## IR SnapView™ Windows® Software

IR SnapView (included) provides all of the tools you need to archive, organize and analyze your infrared images. Draw regions of interest and create custom Microsoft® Word® reports to document your heat-related problems. Compare "before" and "after" images to ensure the problem has been fixed.

**Industrial Precision  
Instruments Pty Ltd**

[www.ipi-infrared.com](http://www.ipi-infrared.com)  
**(03) 9872 5055 phone**  
**(03) 9872 6055 fax**

15/634-644 Mitcham Road  
Mitcham VIC 3132



**INFRARED  
SOLUTIONS**