



NEW
25 MICRON
320x240 RESOLUTION

SHARPER
SIMPLER
SMARTER



HIGHEST IMAGE QUALITY

- 5 inch color LCD
- VOx Microbolometer
 - ≤ 70 mk NETD
 - 60 Hz detector frame rate

BEST IMAGE RESOLUTION*

- 320 x 240 focal plane array
- 25 micron pixel pitch
- 10, 20 & 54mm high quality Germanium lenses

EASIEST-TO-USE

- 180° Pivoting Lens
- Intuitive operation with on-camera Windows CE interface
- Camera tools designed for professional thermographers

NEW SMARTVIEW™ SOFTWARE

- Highest-customizable professional reporting
- Feature rich image analysis tools
- Exceptionally intuitive and easy to use

*FOV Dependent

APPLICATIONS

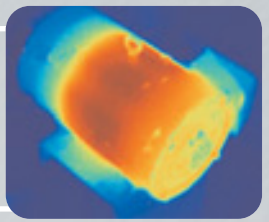
Predictive Maintenance
Identifying and fixing electrical and mechanical problems can reduce downtime, prevent disastrous failures and save time, lives and money.



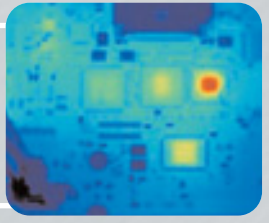
Power/Utility
Perform temperature analysis to monitor substations, transmission lines, power connections, and other transmission equipment for future heat related damage before it becomes an issue.



Process Monitoring
Monitoring and observing temperatures of processes in real-time can save time and money by ensuring that they are operating safely and efficiently.



Research and Development
Visualizing and quantifying the heat patterns generated enables engineers to improve their product as well as the processes used to create it.



Infrared Solutions, Inc.
3550 ANNAPOLIS LANE NORTH SUITE 70
PLYMOUTH MN 55447 USA
T 800 760 4523 F (763) 551 0038
WWW.INFRAREDSOLUTIONS.COM

infrared SOLUTIONS
SHARPER • SIMPLER • SMARTER™



| Imaging Performance | |
|--|--|
| Detector | 60Hz 320x240 Focal Plane Array (FPA), Vanadium Oxide (VO _x) Uncooled Microbolometer |
| Spectral Band | 8µm to 14µm |
| Thermal Sensitivity | ≤ 0.070°C at 30°C |
| Focusing | Single Finger Manual Focus |
| Electronic Zoom | 2X |
| Digital Image Enhancement | Automatic Full-time Enhanced |
| Display and Image Storage | |
| Digital Display | 5" high-resolution, 320 x 240, sunlight readable color LCD |
| On-screen Indicators | Indicate status of battery, target emissivity, background temp and real-time clock |
| Palettes | 8 unique palettes available |
| Storage Medium | Compact Flash Card (stores over 1500 images). |
| File Formats Supported | 14 bit measurement data included. Exportable JPEG, BMP, PCX, PNG, PSD. |
| Set-up Controls | Date/time, Temperature units C/F, Language, Scale, LCD intensity (high/normal/low) |
| Image Controls | Level, Span, Auto Adjust (continuous/manual) |
| Image Browsing | Full-screen and thumbnail |
| Temperature Measurement | |
| Calibrated Temperature Ranges | Range 1 = -20°C to 100°C (-4°F to 212°F) (standard model) Range 2 = -20°C to 350°C (-4°F to 662°F) (standard model) |
| Accuracy | ±2°C or ±2% |
| Measurement Modes | Movable point, centerpoint, center box (area min/max, average), isotherm, color alarm above and below |
| Emissivity Correction | Based on user input. Variable from 0.1 to 1.0 (0.01 increments) |
| Standard Optics | |
| 20mm f/0.8 Germanium Spatial Resolution (IFOV) | Field of view: 23° Horizontal x 17° Vertical (optional lenses available) 1.30 mrad IFOV, 0.15m minimum focus |
| Power | |
| Battery Type | Li-Ion Smart Battery, rechargeable, field-replaceable |
| Battery Operating Time | 3 hours continuous operation |
| Battery Charging | 2 bay intelligent charger powered via AC outlet or optional 12v from car |
| Power Saving | Automatic shutdown and sleep modes (user specified) |
| Interfaces | |
| Video Output | RS170 EIA/NTSC or CCIR/PAL composite video |
| Physical Characteristics | |
| Weight | 1.95kg (4.3lbs) including battery |
| Size | 69mm x 262mm x 162mm (2.75" x 10.5" x 6.5") camera only |
| Tripod Mounting | 1/4" – 20 UNC |
| Environmental | |
| Operating Temperature | -10°C to +50°C (14°F to 122°F) |
| Storage Temperature | -40°C to +70°C (-40°F to 158°F) |
| Humidity | Operating and storage 10% to 95%, non-condensing |
| Shock / Vibration | 25G, IEC 68-2-29 / 3G, IEC 68-2-6 |
| Encapsulation | IP54, IEC 60529 |
| Transit Drop | MIL-STD-810F, Method 516.5, Procedure IV |
| Agency Approvals | CE Approved (EN61326 Standard) |
| Warranty | |
| Term | 12-month warranty included; extended options available |

| Standard Equipment | | | |
|--|--|---|------------------|
| IR Camera with 20mm f/0.8 lens | SmartView™ Software | Premium Carrying Case | Operation Manual |
| Compact Flash Card | Shoulder Strap | PCMCIA Adapter | Video Cable |
| USB Card Reader | 2 Rechargeable Batteries | Battery Charger | |
| Optional Equipment | | | |
| 54 mm Telephoto Lens (9°H x 6°V), 0.47 mrad IFOV, 0.6m min Focus | 10.5 mm Lens (42°H x 32°V), 2.45 mrad IFOV, 0.3m min Focus | Power Cable for 12v from car to charger | Laser Pointer |
| | Heads Up Display | 120v AC Adaptor | Extra Batteries |
| | | | Sun Shield |