

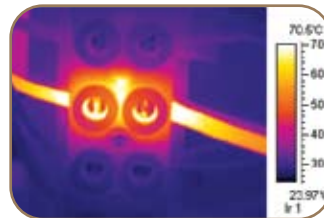
S160

- ▶ High level of thermal sensitivity
- ▶ Ergonomic design, robust & easy to use
- ▶ Full radiometric measurement up to 250° C
- ▶ Records up to 1000 images!
- ▶ Unique tilting 2.5" LCD screen for easy inspection in any direction plus TFT screen for dual information
- ▶ Point and shoot format

The S160's thermal sensitivity of 0.1°C, gives you the superior imaging and measuring capabilities required when measuring small objects or objects at a distance.

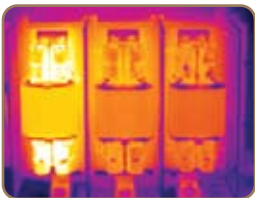
Easy to use and measuring temperatures of up to 250°C, this camera provides convenient and efficient, interruption free usability and adaptability across any number of applications: from simple electrical systems inspection to professional thermography.

The additional functionality of the dual display means you can easily check temperatures without even opening the high resolution 2.5" colour LCD screen.



Shown with optional narrow view lens

Applications



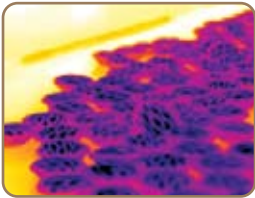
Professional Thermography

With its thermal sensitivity the S160 is able to handle just about any situation, making it an ideal choice for professional thermographers who work in a range of industries including electrical, mechanical, pipework & insulation.



Power & Utilities

The S160 is a perfect camera for use in power generation and utilities applications. With its high level of thermal sensitivity you can use this camera with confidence when looking at small components at a distance.



Process Control

With USB outputs the S160 can be remotely controlled for process control applications.



Building Inspection

The S160's impressive level of resolution and thermal sensitivity, makes it an economical choice when looking to detect small temperature variations over large areas.

Specifications

Detector type	<i>Uncooled FPA microbolometer</i>
Resolution	<i>160 x 120 focal plane array</i>
Thermal Sensitivity	<i>≤ 100mk at 30°C</i>
Frame Rate	<i>50Hz - 60Hz (video rate)</i>
Electronic Zoom	<i>None</i>
Display	<i>2.5" high resolution colour LCD screen</i>
On Screen Indicators	<i>Movable centre point</i>
Storage	<i>Store up to 1000 images</i>
Temperature Range	<i>-20° C to 250° C</i>
Accuracy	<i>± 2° C or ± 2% of reading</i>
Field of View	<i>20° x 15°</i>
Battery Operating Time	<i>2 hours continuous operation</i>
Interfaces	<i>USB & Video</i>
Weight	<i>700g including battery & std lens</i>
Size	<i>211 mm x 80mm x 195mm</i>
Colour Palettes	<i>5 Palettes (incl rainbow, iron, B&W etc)</i>
Software	<i>SAT Report 2005</i>
Warranty	<i>12 months</i>

www.ipi-infrared.com

AUSTRALIA FREECALL: 1300 781 701

INTERNATIONAL PHONE: +61 3 9872 5055

Unit 15, 634-644 Mitcham Road, Mitcham, VIC, Australia

IPi INDUSTRIAL
PRECISION
INSTRUMENTS