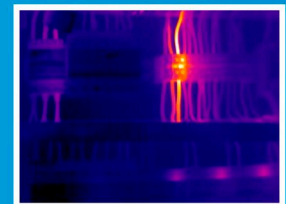
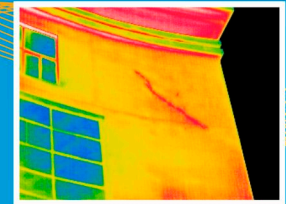
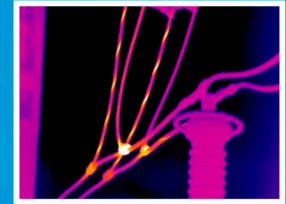
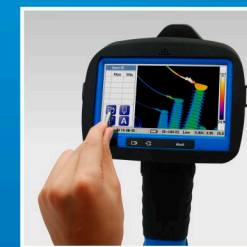


- 384x288 Detector
- High definition 4.3" touch screen LCD
- Ergonomics design
- User friendly operation

KC500



IPI INDUSTRIAL
PRECISION
INSTRUMENTS



IMAGING PERFORMANCE

Field of view / min focus distance	32°x24°/ 0.1m
Spatial resolution (IFOV)	1.45 mrad
Thermal sensitivity	0.05°C at 30°C
Image frequency	50/60 Hz non-interlaced
Focus	Manual
Electronic zoom function	2x 4x 8x
Detector type	Focal Plane Array (FPA), uncooled microbolometer 384 x 288 pixels
Spectral range	7.5-14µm
Digital image enhancement	Normal and enhanced
Built-in digital video	1280 x 1024 pixels, full color

IMAGE PRESENTATION

Video output	Composite video
External display	4.3" LCD with touch screen
Palette	6 standard palettes / Independent palette for box areas
Gemi-vision	IR image overlap with visible light image

MEASUREMENT

Temperature range	-20°C to +350°C (Optional: Extend to +1500°C)
Accuracy	±2°C , ±2% of reading
Measurement mode	Spot (no limitation), automatic placement and reading of max/min/average temperature within area; Line profile (no limitation); Area (6); Isotherm(1); Delta T.
Alarm	Colour / Sound alarm
Emissivity correction	Variable from 0.1 to 1.0 or select from pre-defined material list
External optics/window correction	Automatic, based on input of optics / window transmission and temperature.

ENVIRONMENTAL SPECIFICATION

Operating temperature range	-15°C to +50°C
Storage temperature range	-40°C to +70°C
Humidity	Operating and storage 10% to 95%, non-condensing
Encapsulation	IP 54 IEC 529
Shock	Operational: 25G, IEC 68-2-29
Vibration	Operational: 2.5G, IEC 68-2-6

IMAGE STORAGE

Type	1G built-in flash memory. 2G removable SD-Card (Optional: Extend to 16G). 16 bit measurement data stored into SD-card.
File format-Thermal	Standard JPEG and IMA, 16 bit measurement data included.
File format-Visual	Standard JPEG (including movable marker) linked with corresponding thermal image.
Voice annotation of images	60 sec of digital voice clip stored together with the image. (Optional: Bluetooth wireless headset)
Text annotation of images	Pre-defined text selected and stored together with the image.

SYSTEM STATUS INDICATOR

LCD Display	System information, Menu, Analysis tools.
-------------	---

LASER POINTER

Classification	Class 2
Type	Semiconductor AlGaInP Diode, Laser: 1 mW/635 nm red

BATTERY SYSTEM

Type	Li-ion, rechargeable, field replaceable
Operating time	3 hours continuous operation
Charging system	2-bay intelligent charger (Optional: External power cable with Std plug and AC adapter; 12V from car cigarette lighter)
Power saving	Automatic shutdown and sleep mode(user selectable)

INTERFACES

USB	Image (thermal and visual), measurement, voice and text transferred to PC.
RJ45 (optional)	16 bit fully radiometric IR-video transferred to PC

VIDEO STORAGE(OPTIONAL)

Type	Recording of 16 bit fully radiometric IR-video to SD-card
------	---

LENSES(OPTIONAL)

Field of view	8°x6°; 16°x12°; 48°x36°
---------------	-------------------------

Unit 15/634-644 Mitcham Rd, Mitcham, VIC Australia 3132

Phone: +61 3 9872 5055

Fax: +61 3 9872 6055

www.ipi-infrared.com.au | www.ipi-inst.com.au

www.ipi-online.com.au

